



**Spring Shenanigans CMO**  
**Sunday April 14<sup>th</sup>, 2024**

**Deer Path Park**

**120 W Woodchurch Rd, Flemington, NJ 08822**

**PARKING IN FIRST LOT ON LEFT ONLY**

**(it is safe to follow GPS to get here - you'll come in off Route 31)**

**Registration Opens 8:30**

**Riders out between 9am-10:30am**

**Must be off trail by 4.**

**Short Course: 5 miles / Long Course 10 miles**

*Approximately mileage (may be updated by 3/31/24)*

**RSVP requested – please text or email Emily  
with anticipated arrival time by 4/10.**

**908-310-9842 / Erschrack@gmail.com**

**Rider Managers:**

**Emily Canavan & Sandy Howland**

**908-310-9842 / 908-303-7955**

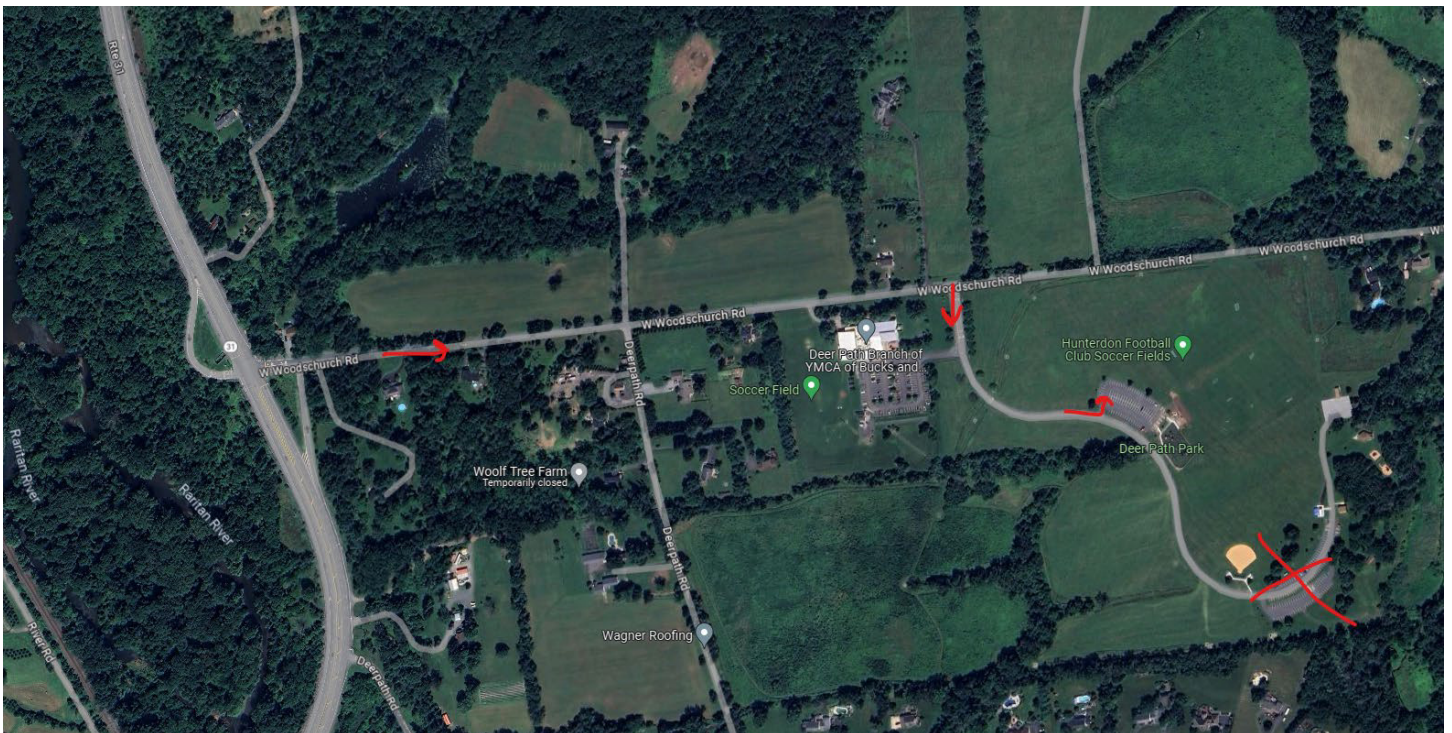


Details:

Registration opens at 8:30. Please do NOT arrive before 8:00am.

Parking is ONLY in the first lot on the left and may be tight so please park mindfully. ALL Manure must be removed. The Park has requested that HORSES REMAIN ON PAVEMENT within the parking area. Please DO NOT go on the grass until you are on trail. (I know it's tough!)

## DIRECTIONS AND PARKING



### From the North

Take Route 78 exit 17 to merge onto NJ-31 South toward Flemington/Trenton

Continue straight to stay on NJ-31 S for 5.5 mi to the JUGHANDLE for Woodschurch Road

Take W Woodschurch Rd 0.8 miles and make a RIGHT into Deer Path Park

Continue to the FIRST Parking area on your LEFT.