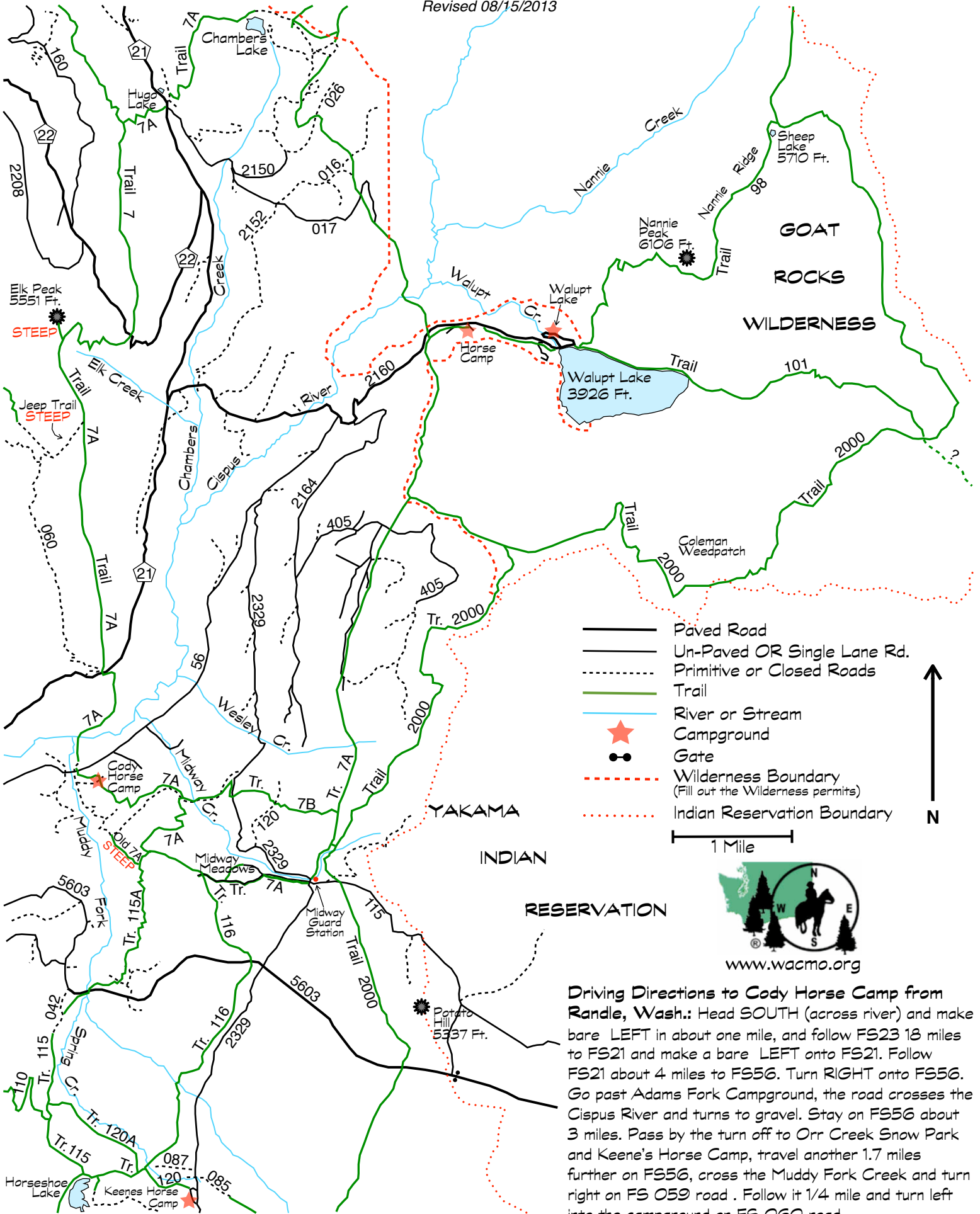


# Cody Horse Camp/Walupt Lake Horse Camp

Created by Donna Amos

Revised 08/15/2013



- Paved Road
- - - Un-Paved OR Single Lane Rd.
- ... Primitive or Closed Roads
- Trail
- River or Stream
- ★ Campground
- Gate
- - - Wilderness Boundary (Fill out the Wilderness permits)
- ... Indian Reservation Boundary

1 Mile



**Driving Directions to Cody Horse Camp from Randle, Wash.:** Head **SOUTH** (across river) and make bare **LEFT** in about one mile, and follow FS23 18 miles to FS21 and make a bare **LEFT** onto FS21. Follow FS21 about 4 miles to FS56. Turn **RIGHT** onto FS56. Go past Adams Fork Campground, the road crosses the Cispus River and turns to gravel. Stay on FS56 about 3 miles. Pass by the turn off to Orr Creek Snow Park and Keene's Horse Camp, travel another 1.7 miles further on FS56, cross the Muddy Fork Creek and turn right on FS 059 road . Follow it 1/4 mile and turn left into the campground on FS 060 road.